



Hopeful Monsters

by Hopeful Monster

Production Pack - 2023/2024



Contents

- 3 About the Show
- 4 About the Company
- 6 Press and Marketing
- 8 Front of House Information
- 9 Technical Details
- 11 Generic Lighting Plan
- 12 Contact Details



About the Show

Hopeful Monsters is a highly visual piece of tabletop theatre inspired by evolutionary theory. The show is a playful illustration of the notion that all living things are made up of the same fundamental building blocks. Using innovative hand puppetry to create unexpected creatures that move and morph in unusual ways, it takes a single element and reveals how much it can do and become. With no central character, the narrative flows between water, land and air on a strange and mesmerising journey through nature.

The action is set to an emotive and humorous soundtrack, and is performed without words, making it accessible to international as well as deaf and hard-of-hearing audiences.

The film version is also available to book for screening events. For more information see the contact details at the bottom of the document.

Creative Team

Created and Performed by Bori Mezo, Ella Mackay and Eti Meacock

Lighting Design by Topher Dagg and Sarah Wright

Soundtrack composed by Michael Hyland

Developed with support from Creative Scotland, Cumbernauld Theatre at Lanternhouse, Moving Parts Scratch Space and Outside Eyes at Tron Theatre Glasgow.

Background

Hopeful Monsters is the company's eponymous debut show. It premiered at Beverley Puppet Festival in 2018.

Previous Performances include:

[Festival Mondial des Teatres de Marionettes](#) (22nd edition, Charleville-Mezieres, France)

[Espacio Abierto Quinta de los Molinos](#) (Madrid, Spain)

[Carthage Puppetry Days Festival](#) (Tunis, Tunisia)

[International Festival for Young Audiences](#) (Iasi, Romania)

[Materia Magica Festival](#) (Klaipeda, Lithuania)

[Moving Parts, Newcastle Puppetry Festival](#) (Newcastle upon Tyne, UK)

[Manipulate Festival](#), Traverse Theatre and Horsecross (Edinburgh and Perth, UK)

World On A String Festival (Melbourne, Australia)

Future Life

The production is available to tour nationally and internationally.



The Company

Hopeful Monster is a Scottish/English/Hungarian ensemble of three women working collaboratively to create playful visual theatre inspired by the natural world and informed by science. In evolutionary theory, a 'hopeful monster' is what you get when a sudden genetic mutation produces a radically new organism. Like its namesake, the company aims to create work that is weird and wonderful, playing with the possibilities of puppetry and delighting in the unusual visual creations that emerge.

The company formed in 2017 after training at the Curious School of Puppetry and is now based across the UK (Glasgow, London and North Devon).

The Creative Team

Bori Mezö

With a degree in English Literature and Theatre Studies, Bori moved from Budapest to London to train on the Puppet Theatre Barge. Since then she's done various puppetry courses with various artists, in various places: with John Roberts, Puppets in Prague, Curious School of Puppetry and more. She is fluent in less than or equal to two languages. She's interested in rhythm and what makes visual storytelling tick. She loves theatre and most of all puppetry for its ephemerality, playfulness and its moments of jaw-dropping, childlike discoveries. You can often see her puppeteering in shows at the Puppet Theatre Barge or touring with String Theatre or Nod at the Fox. She recently created a storytelling puppet show in a suitcase, "The Giant Who Slept for Ten Thousand Years" and The Doorstepper's Map, an online interactive platform leading to a directory of doorstep performers.

Instagram: borimezo

Website: www.thedoorsteppersmap.co.uk

Ella Mackay

Ella is a puppet maker and puppeteer based in Glasgow. She studied Fine Art at the Glasgow School of Art before side-stepping into the puppet world, training at the Curious School of Puppetry and the London School of Puppetry. She also creates as Nudge Puppets, freelance puppet making for other companies and delivering puppet experiences and workshops. She spends most of her time tinkering away on puppet builds and is often covered in bits of fluff, foam and tape but has also been spotted trotting around botanical gardens as a life-size unicorn. She is interested in conveying both emotion and silliness through movement and playing on the line where self and other become blurred. She is drawn to the uncanniness of empathising with puppets and what this can say about the experience of being and connection.

Website: www.ellamackay.co.uk

Facebook: @nudgepuppets

Instagram: nudge_puppets

Eti Meacock

Eti is a maker, rewilder and unintentional animist who lives and works in Devon. She has a background in Fine Art Painting from Brighton University and went on to train as a performer at the Curious School of Puppetry, The Puppet Theatre Barge, and Bread and Puppet Theater in Vermont, but these days you're more likely to find her clambering through a hedge row than on stage. Although her work as a freelance puppeteer opened up some exciting opportunities, like being the left shoulder of a giant polar bear or animating pieces of rigatoni pasta, she is primarily interested in the process of devising new work and using creativity and puppetry as a tool to develop nature connection and radical empathy in herself and others.

Instagram: eti.me



Press and Marketing

Production Images by Mihaela Bodlovic

Trailer: <https://vimeo.com/275525332>



Marketing Copy

Short: 43 Words

From simple organisms to giant beasts, human hands morph and move, creating unexpected creatures as we journey through water, earth and air. It's a tale of struggle and survival, a reminder of the playfulness of living. After all, we humans are animals too.

Long: 71 words

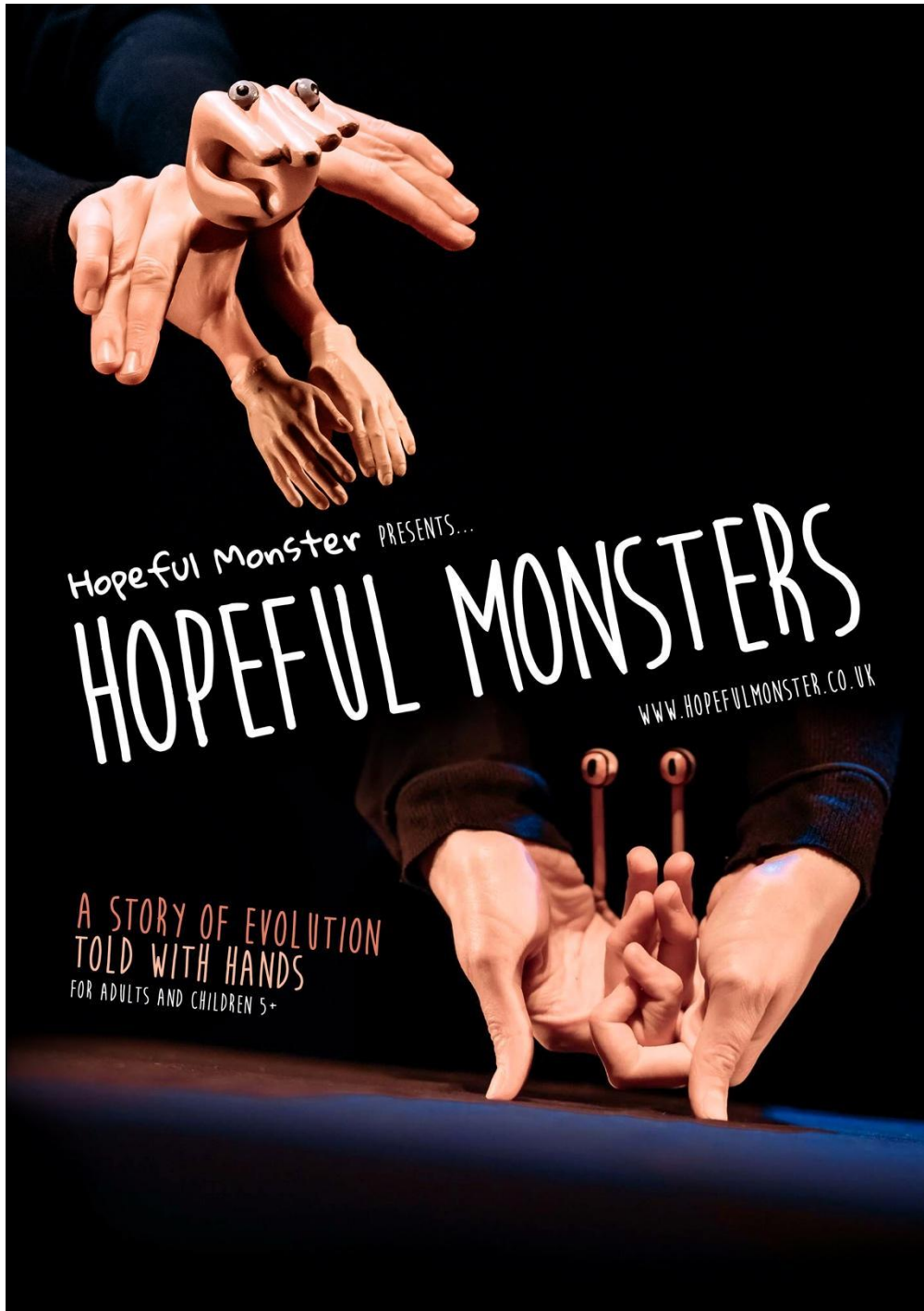
Hopeful Monsters is an exciting piece of tabletop theatre combining puppetry and an original soundtrack to explore the fundamental building blocks of life using only human hands.



From simple organisms to giant beasts, the hands move and morph: constantly shifting and changing to create unexpected creatures as we journey through water, earth and air.

Hopeful Monsters is a reminder of the playfulness of living. After all, we humans are animals too.

Poster image:





Front of House Information

Pre show	<p>Before the start of the performance the audience should be reminded:</p> <p>The show is performed in near darkness. They should switch off mobile phones. There is no photography allowed during the performance.</p>
House opening	<p>The house will open five minutes before the advertised start time. The performers are pre-set on stage.</p>
Running time	<p>The house opens five minutes before the advertised performance time and it should take around 5 minutes to seat the audience. The performance runs at 40 minutes. The performers will invite the audience to join them on stage at the end to see the puppets and props. This can be for up to 10 minutes.</p>
During the performance	<p>The venue must ensure that there are front of house staff present in the auditorium during the performance. As it can be very dark in the auditorium it is useful to have them ready to take audience members out of the auditorium if necessary.</p>
Latecomers	<p>Latecomers are not permitted. If it is clear that there is going to be latecomers, we would prefer to hold the show by around 5 minutes to limit disruptions.</p>
Photography & mobile phones	<p>The audience should be notified as part of the pre-show speech that mobile phones should be switched off and that photography is not permitted during the performance.</p>
Programmes	<p>The company doesn't provide programmes.</p>
Merchandise	<p>No merchandise</p>
PRS information	<p>All recorded music used is from an original score by Michael Hyland.</p>
Additional information	<p>None</p>



Technical Details

Company on Tour	3 x Puppeteers 1 x Technical Stage Manager
Vehicles on tour (UK)	1 x Short Wheel Base Van <i>Parking will be required for the van. Please notify in advance if there are no parking facilities at the venue.</i>
Arrival & Set-Up	Minimum two sessions (eight hours) set up time Venue technician required to assist with load-in and technical troubleshooting.
Running Time	40 minutes
Interval	No Interval
Dismantle and Load-out	60 Minutes
Suitability	Recommended age 5+ and their families
Capacity	Maximum 150
Space & Venue Requirements	Total Blackout Required Black Masking (2x min 1.5m width each) 6m x 5m (W x D) stage dimensions Minimum 4m height clearance Raked seating end-on
Set Details	Modular performance table – two felted wooden playing surface pieces with metal frame and front and wing panels (felted wood) Props inc. various hand puppet augmentations
Sound Requirements	Pre-recorded soundtrack is played from a toured iMac running QLab 5 (provided by company) PA to be provided by venue/promoter On-stage monitor required if possible
Lighting Requirements	Pre-rig required if possible Generic Lighting plan attached below, if booked we will send a specific lighting plan for your venue Generally the venue should provide: <ul style="list-style-type: none">● S4 Zoom 25/50 x 1● RJ613sx x 5● RJ614sx x 6● Fresnel 650W x 2 (with barn doors)● Martin Rush 2 x 1

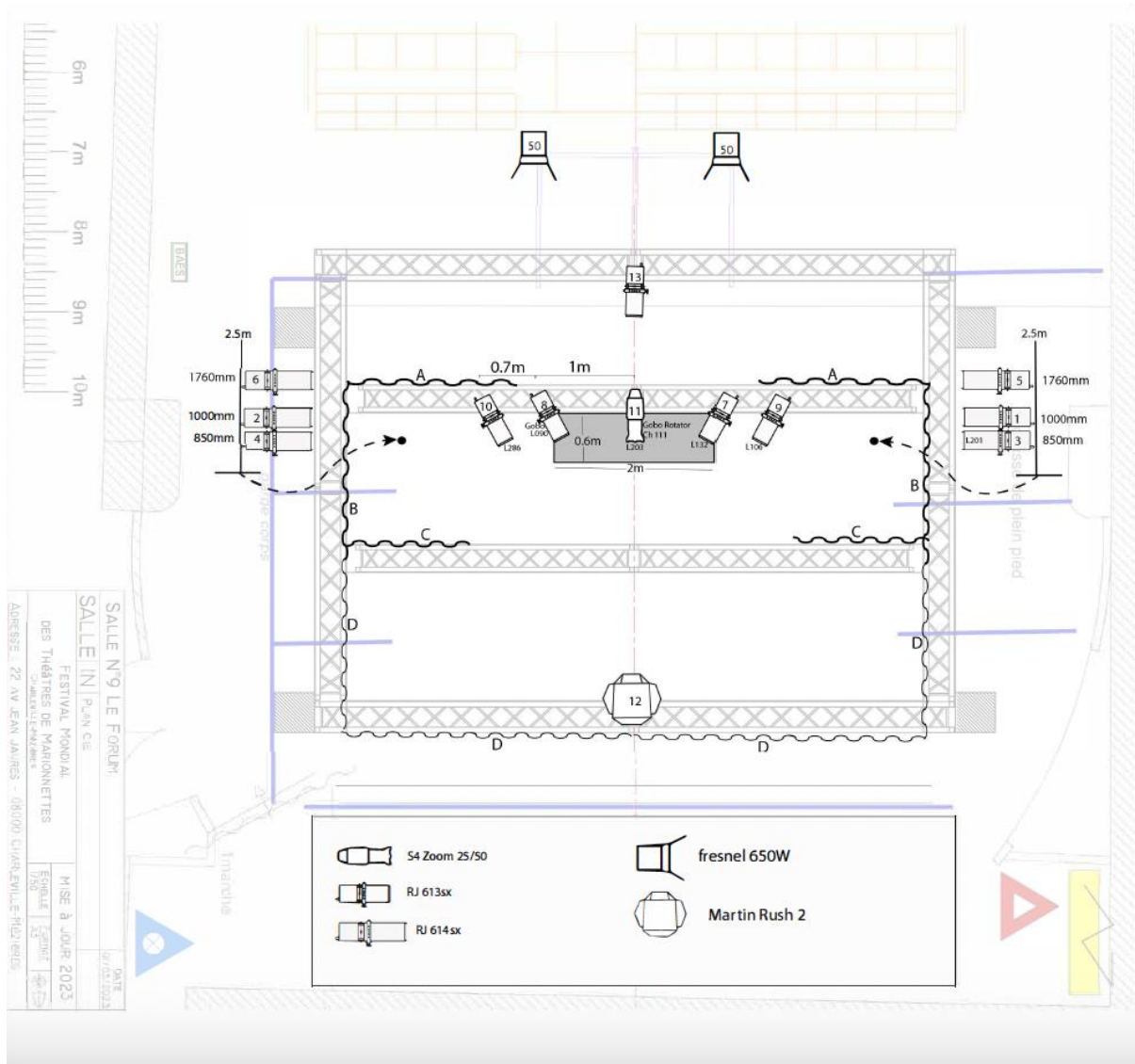


	<p>All gels and gobos toured with company (venue to provide holders) Company can provide boom arms for RJ614s, boom and tank traps to be provided by venue</p>
Operation	Lighting and sound will be operated by the TSM
Backstage Requirements	At least 1 Dressing room Access to laundry washing, drying and ironing facilities
Travel and accommodation	<p>The promoters are responsible for covering travel and accommodation on top of the artistic fees.</p> <p>For UK touring the company can arrange transport but the promoter is responsible for arranging accommodation (see terms below). For international touring the company can arrange UK-ground transport to airports. The promoter is responsible for arranging:</p> <ul style="list-style-type: none">• Flights• All airport transfers to accommodation• Single room accommodation, with private bathroom, within 20 minutes walking distance of the venue• Where accommodation is not within walking distance of the venue, the promoter must make travel arrangements or provide an allowance to the company members for travel



Hopeful Monsters Generic Lighting Plan

(Not to Scale)





Contact Details

Bookings Contact

Bori Mezo

+44 (0)7717 047 059

hopefulmonstertheatre@gmail.com